



UNIVERSITY
OF HULL

HULL UNIVERSITY
BUSINESS SCHOOL



AACSB
ACCREDITED



ASSOCIATION
OF
AMBA
ACCREDITED

Hull University Business School

Facilities and Corporate Room Booking

Hull University Business School provides support and opportunities for growth to SMEs and businesses through a range of facilities and room bookings.

Executive Training Suite

Our meeting rooms and breakout spaces have a high specification. They have access to University campus facilities and some amazing benefits like networking events and integration with our world class academics, knowledge networks and the opportunity to propose live student projects.

- Guest Wifi
- Derwent Café access with Costa Coffee
- Stylish breakout spaces
- Snacks and refreshments delivered to you (pre-book)
- Air conditioning
- Accessibility friendly
- Presentation lighting
- Surround sound
- Pre-paid parking (pre-book)

With support:

- Specialist purpose built facilities (e.g. Law Court)
- Panopto meeting recording on request
- Webinar event broadcast
- Hybrid facilities



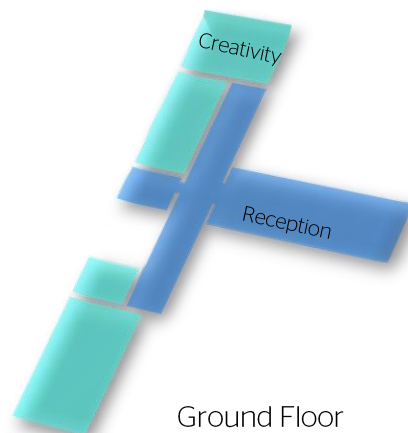
Creativity / Tech

Capacity- 16

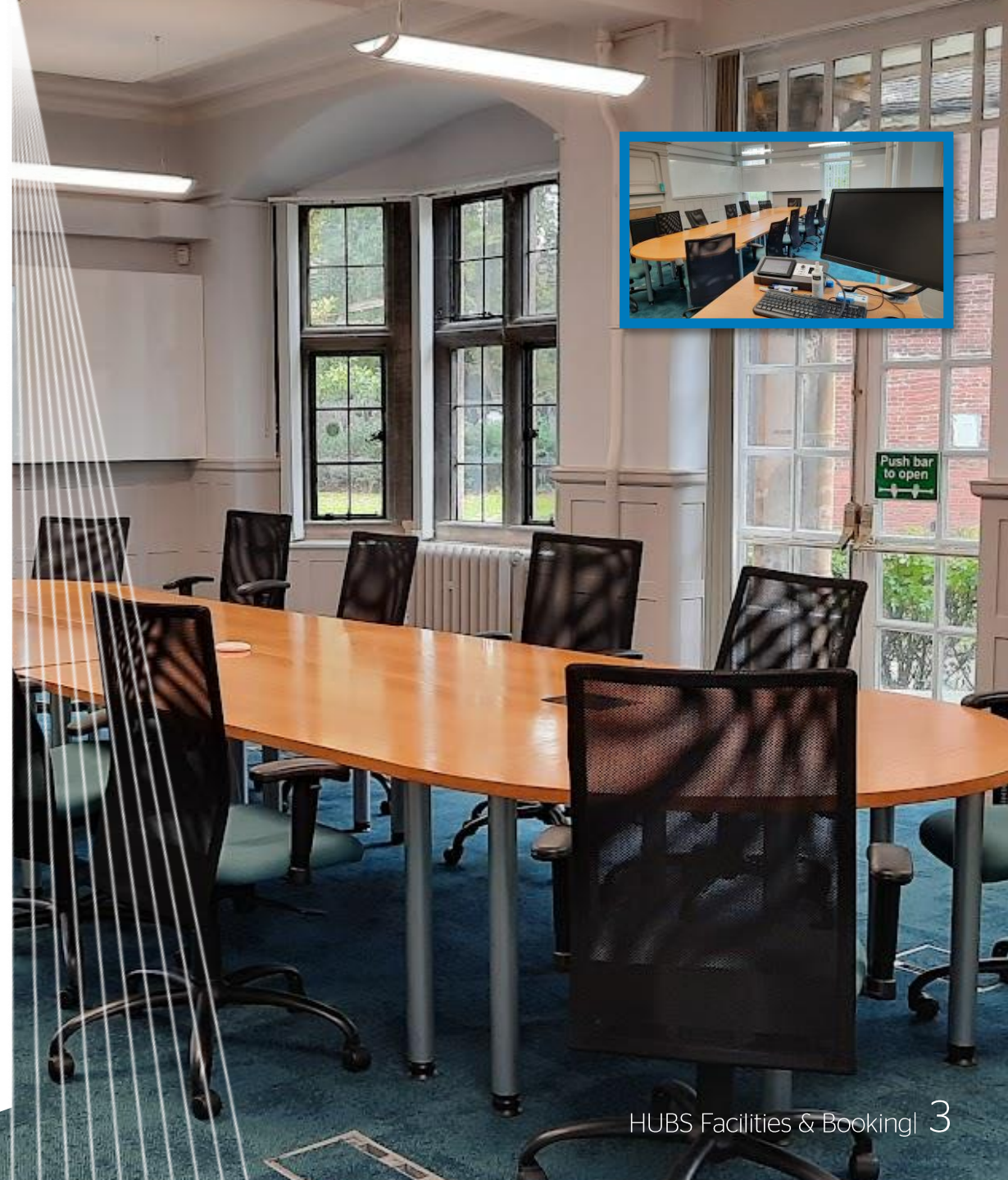
Price- Full Day- £150

Half Day- £100

Layout Options- Boardroom



| Features | Details |
|--------------------------|--|
| Technical specifications | Guest Wifi (free), Laptop connect via HDMI to projector, Lectern PC and Laptop connect via HDMI to panel. Projector, hybrid working and specialist tracking camera and microphone for use with hybrid webinar and video conferencing facilities |
| Layout | Boardroom |
| Additional Features | Integrated wall wipe-boards, Adjustable lighting, Lectern |
| Campus Facilities | Access to Cafes and Restaurants |
| Hospitality | Delivered to delegates (requires pre-booking) |



Innovation

Capacity- 16

Price- Full Day- £100

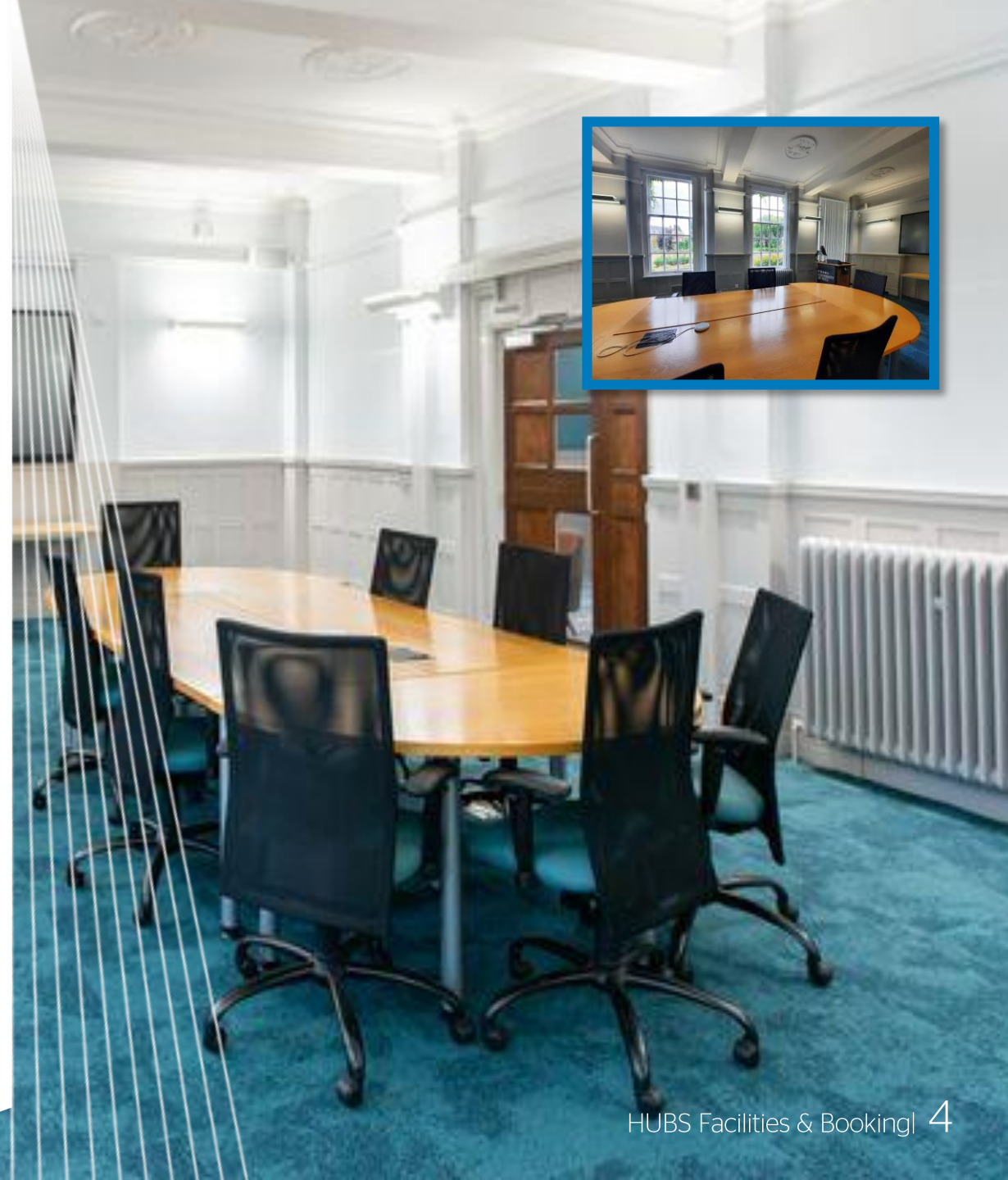
Half Day- £60

Layout Options- Boardroom,
Horseshoe, classroom



Ground Floor

| Features | Details |
|--------------------------|---|
| Technical specifications | Guest Wifi (free), Laptop connect via HDMI to projector, Lecturn PC and Laptop connect via HDMI to panel. Projector, hybrid working and specialist tracking camera and microphone for use with hybrid webinar and video conferencing facilities |
| Layout | Boardroom, Horseshoe, Classroom |
| Additional Features | Adjustable lighting, Lectern, mobile wipeboards |
| Campus Facilities | Access to Cafes and Restaurants |
| Hospitality | Delivered to delegates (requires pre-booking) |



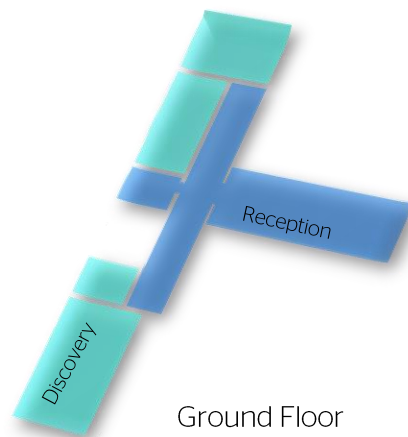
Discovery

Capacity: 32

Price- Full Day: £150

Half Day: £100

Layout Options: Boardroom,
Lecture, Cabaret, Horseshoe,
Classroom, Herringbone



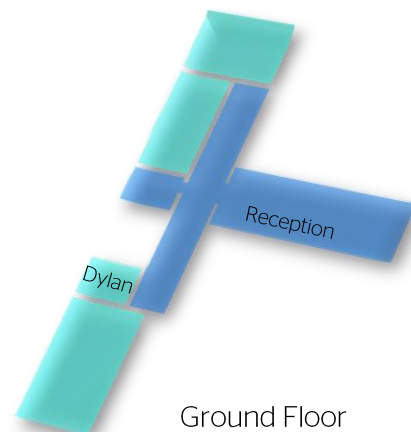
Ground Floor

| Features | Details |
|--------------------------|---|
| Technical specifications | Guest Wifi (free), Laptop connect via HDMI to projector, Lectern PC and Laptop connect via HDMI to panel. Projector, hybrid working and specialist tracking camera and microphone for use with hybrid webinar and video conferencing facilities |
| Layout | Boardroom, Horseshoe, Classroom, Cabaret, Lecture |
| Additional Features | Adjustable lighting, Lectern, mobile wipeboards |
| Campus Facilities | Access to Cafes and Restaurants |
| Hospitality | Delivered to delegates (requires pre-booking) |



Dylan

Capacity- 8
Price- Full Day- £80
Half Day- £50
Layout Options-
 Boardroom, Interview



| Features | Details |
|--------------------------|--|
| Technical specifications | Guest Wifi (free), Laptop connect via HDMI to projector,. HD TV Screen, hybrid working and specialist tracking camera and microphone for use with hybrid webinar and video conferencing facilities |
| Layout | Boardroom |
| Additional Features | Adjustable lighting |
| Campus Facilities | Access to Cafes and Restaurants |
| Hospitality | Delivered to delegates (requires pre-booking) |



Nidd SR1 and SR2

Capacity- 40 (Or 60 if lecture layout)

Price- Full Day- £150

Half Day- £100

Layout Options- Lecture, Cabaret, Horseshoe, Classroom, Herringbone

| Features | Details |
|--------------------------|--|
| Technical specifications | Guest Wifi (free), Laptop connect via HDMI to projector, 2x Lecturn PC and Laptop connect via HDMI to panel. Projector, hybrid working and specialist tracking camera and microphone for use with hybrid webinar and video conferencing facilities |
| Layout | Boardroom, Horseshoe, Classroom, Cabaret, Lecture Versatile and spacious room with dividing screen to separate room in to two |
| Additional Features | Adjustable lighting, Lectern, mobile wipeboards |
| Campus Facilities | Access to Cafes and Restaurants |
| Hospitality | Delivered to delegates (requires pre-booking) |





UNIVERSITY
OF HULL

Business Lounge

This is a light and modern mezzanine space looking out over the entrance to the Business Faculty. It works in harmony with our Executive meeting rooms and is ideal for individuals, partners and organisations working with the University of Hull. The perfect social space for relaxed meetings, networking or holding breakout sessions.

Capacity- 20-30

Price- Full Day- £400

Half Day- £250

Layout Options- Networking, informal lecture

| Features | Details |
|--------------------------|---|
| Technical specifications | Guest Wifi (free), |
| Layout | Networking, Lecture |
| Additional Features | Adjustable lighting, Lectern, mobile wipeboards |
| Campus Facilities | Access to Cafes and Restaurants |
| Hospitality | Delivered to delegates (requires pre-booking) |



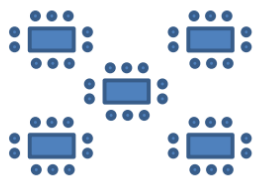
Room Configurations

Many of our rooms can be reconfigured easily.

Theatre



Cabaret/Cafe



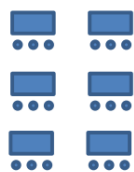
Boardroom



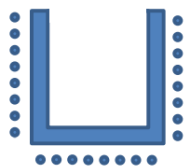
Square



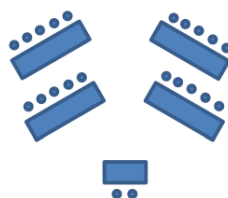
Classroom



Horseshoe



Herringbone



Member's Forums and Events

We have a number of members events and forums that are using our facilities to thrive. They benefit from the support of our team who can book everything to make your event run smoothly. We host a range of open events that provide insights, new knowledge and opportunities to network with our academic and business community.



Specialist Facilities and support

The Business School boasts a range of facilities that can be hired for bespoke events. Please contact the team to discuss.

- **Hybrid Law Court** – ideal for Training
- **Showcase Interactive Training Suite** - with floor to ceiling screen and cabaret seating, plus breakout space
- **Derwent Café**- This has a capacity of 150 and can be used for larger events.
- **Allam lecture Theatre** – seats 500 with three viewing screens
- 24hour security

Note - Any booking of specialist facilities it is recommended to have an in-person viewing first.





UNIVERSITY
OF HULL

Additional Access: Derwent Cafe

The Derwent Cafe sits right at the heart of the Business School and is open to use while using our other facilities. It's a great place to meet and catch up over a coffee or take a break from meetings. Head to the beautiful Grade II listed Derwent Building for a relaxed, calming venue serving delicious hot and cold snacks and tempting afternoon treats and Costa Coffee beverages. Derwent Cafe is also a Fair Trade cafe.

- Guest Wifi
- Breakout areas
- Snacks and refreshments
- Air Conditioning
- Costa Coffee
- Outdoor seating



On Campus Leisure

While you are using our facilities look out for events our leisure facilities on campus. Look out for the gym, art gallery and restaurant these include:

- Stunning grounds
- Fully sustainable by 2027
- Art Gallery with visiting exhibitions
- Ferens fine art collection in the art gallery
- Ferens fine art collection across campus
- Theatre spaces Middleton Hall and Gulbenkian.
- Campus tours for example the Larkin tour.
- State of the art gym facilities
- Cafes including the Art Café, Derwent and Brynmor Jones
- Weatherspoons bar
- Canham Turner Restaurant
- Regular events and talks open to guests.
- Gigs and Concerts





UNIVERSITY
OF HULL

Parking

Wilberforce car park
(via Inglemire lane) **circled in
purple** is just a short 5 minute
walk from the Business
School (**circled in Blue**)

Parking is £2 per day, with pre
payment available or pay on
the day. Accessible parking is
available on request, which is
closer to the Business School.

Parking free after 4pm is free.

*Note - All parking is subject to
availability and cannot be
guaranteed*



Hospitality Menu Options

In addition to the cafes and restaurants we have across campus Corporate bookings can have hospitality delivered to your room. Please pre book 10 day's notice.

Popular options include

- Breakfast croissants and fresh fruit
- Tea, Coffee and Biscuits
- Bento boxes (a selection of sweet & savory lunches packed per person)

If you would like to see further options, please request a menu, our on site catering team Beyond Events offer a wide variety of food options and can cater to any diet on request.



Prices

All are prices are fixed and cover front-of-house support, technical assistance and facility administration.

Additional costs will apply for those wishing to order hospitality and arrange pre-paid parking on campus.

All prices are subject to VAT charges.

| Room | Features | Layout | Capacity | Full day Price (excl VAT) | Half- day Price (excl VAT) |
|---------------------------|---|---|-----------|---------------------------|----------------------------|
| Creativity Room | Control Panel, DVD, Lectern Mic, TV, Video Conference | Boardroom only | 16 people | £150 | £100 |
| Innovation Room | Control Panel, DVD, Lectern Mic, Data Projector, Video Conference | Board room, Cabaret tables | 16 people | £100 | £60 |
| Discovery Room | Control Panel, DVD, Lectern Mic, Data Projector, Video Conference | Board room, Lecture, Cabaret tables, Horseshoe, Classroom, Herringbone, Theatre | 32 people | £150 | £100 |
| Nidd SR1 & SR2 | Control Panel, DVD, Lectern Mic, Data Projector, Video Conference | Board room, Lecture, Cabaret tables, Horseshoe, Classroom, Herringbone, Theatre | 40 people | £80 | £50 |
| Dylan | Control Panel, DVD, Lectern Mic, Data Projector, Video Conference | Boardroom | 8 people | £80 | £50 |
| Business Lounge | Presentation screens on request | Networking, Informal Lecture | 45 people | £400 | £250 |

Find out more

If you are interested in booking any of our rooms and facilities then please email us using the contact below. The extensive expertise held within Hull University Business School is shared with our partners through collaboration to help businesses develop leaders, experts and professionals of the future.

Email: exec-education@hull.ac.uk

For more information about our Executive Education programmes please visit execeducation.hull.ac.uk

Shaping, inspiring and equipping the next generation of leaders to deal with emergent complex challenges in a carbon neutral and digitally transformed world.

