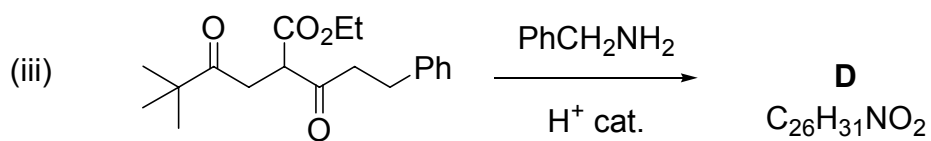
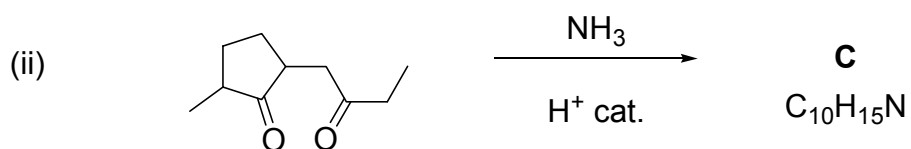
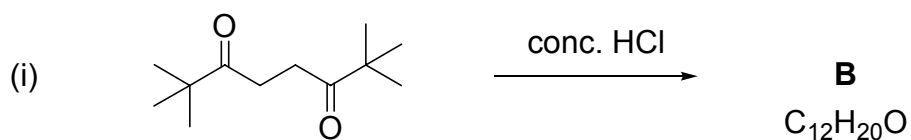


**Bifunctional Chemistry, Semester 2, 2010 (06522)**

2. Answer **ALL** of the following parts.

- (a) RWB.
- (b) RWB.
- (c) RWB

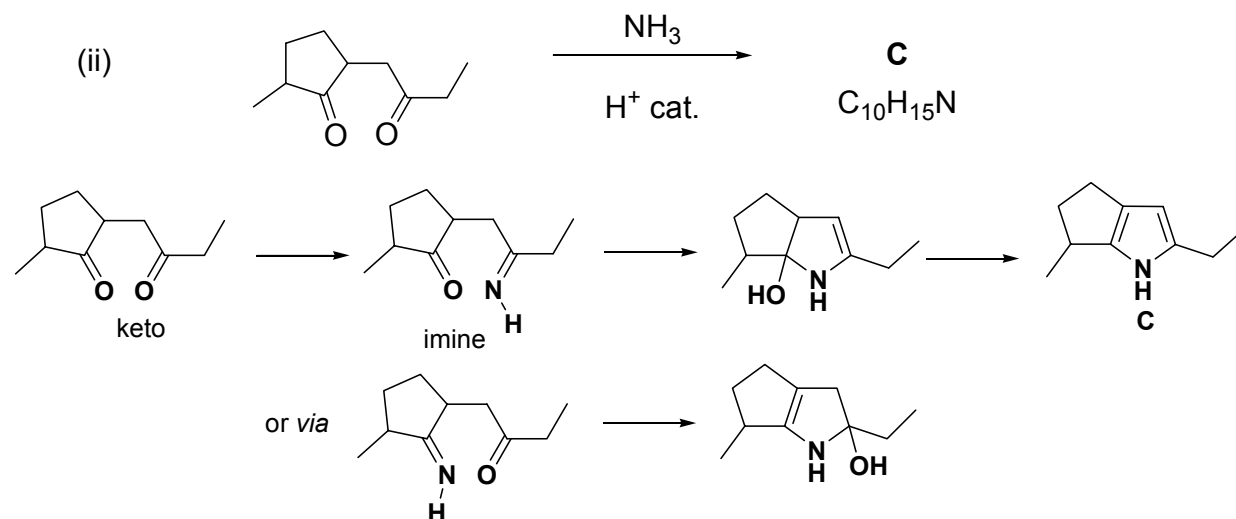
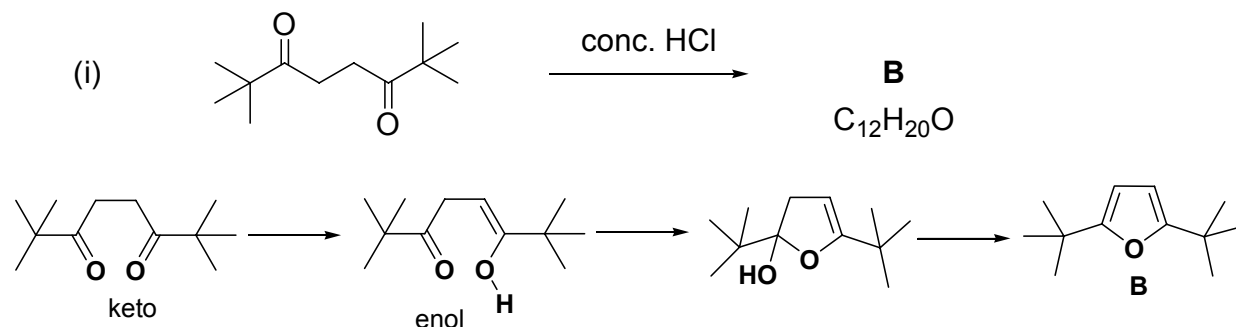
(d) For **TWO** of the following parts work, out the structure of the unknown products. Mechanisms are not required but you should draw the key intermediates to explain your answer.



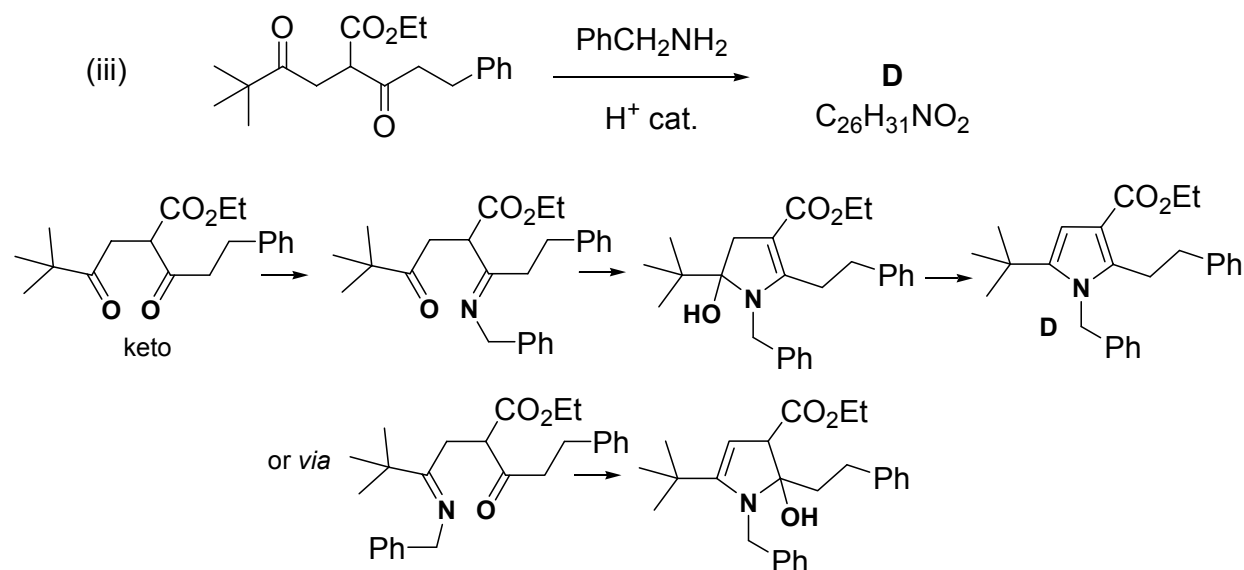
(2 × 5 marks)

**Bifunctional Chemistry, Semester 2, 2010 (06522)**  
**MODEL ANSWER**

- (d) For **TWO** of the following parts work, out the structure of the unknown products. Mechanisms are not required but you should draw the key intermediates to explain your answer.



Identifying the corresponding enamines will score equivalent credit to the imines.



Identifying the corresponding enamines will score equivalent credit to the imines.