



RepoMMan Project

Deliverable D-D2

Deployment of BPEL environment:
Active Endpoints ActiveWebflow Standard and Professional,
ActiveBPEL Engine

Simon Lamb

October 2005
updated March 2006

Version 1.0



The RepoMMan Project

Project Director:	Ian Dolphin, Head of e-Strategy, University of Hull (i.dolphin@hull.ac.uk)
Project Manager:	Richard Green (r.green@hull.ac.uk)
Technical Lead:	Robert Sherratt (r.sherratt@hull.ac.uk)
Repository Domain Specialist:	Chris Awre (c.awre@hull.ac.uk)

The Repository Metadata and Management Project (RepoMMan) at the University of Hull is funded by the JISC Digital Repositories Programme. The project is being carried out by the University's e-Services Integration Group (e-SIG) within Academic Services.

Introduction

This Installation guide will list and describe the processes involved in the installation of both ActiveWebflow Standard and ActiveWebflow Professional.

ActiveWebflow Standard provides the server software technology for deploying BPEL service applications. ActiveWebflow Professional is the development environment for the creation, testing and deployment of the BPEL processes. ActiveWebflow Professional must be installed in order to use the process persistence and advanced engine deployment functionality in ActiveWebflow Standard.

Both ActiveWebflow Professional and ActiveWebflow Standard should be installed.

ActiveWebflow Licenses

The RepoMMan project has joined the Active Endpoints Academic Programme and through it has obtained licence keys for research and development but not for final deployment.

To use the ActiveWebflow software, the license keys need to be entered at the install stage of both ActiveWebflow Professional and ActiveWebflow Standard. The following locations contain the license keys for the respective software:

ActiveWebflow Standard:
[deleted]

ActiveWebflow Professional:
[deleted]

It is recommended that you save the license keys on your computer for future installations. Once you have accessed the above links in your browser click [Save As], and save the page to a memorable location.

ActiveWebflow Standard and ActiveWebflow Professional Download

Both ActiveWebflow Standard and ActiveWebflow Professional can be downloaded from the Active-Endpoints website at:

<http://www.active-endpoints.com/software/awfstdd67.html>

(At June 2006, ActiveWebflow Standard v1.1 and ActiveWebflow Professional v1.5 are the current releases.)

Download both ActiveWebflow Standard and ActiveWebflow Professional from the download page (ActiveWebflow Standard is available for Linux install, but not ActiveWebflow Professional). The Windows versions of the File downloads are *.zip archives.

ActiveWebflow Standard Installation

To install ActiveWebflow Standard, it is recommended that the contents of the downloaded 'awf_standard-tomcat.zip' are 'extracted' into a temporary folder.

Once all files have been extracted into the temporary directory, Open the directory and [Run] AWF_Standard.exe, this will start the installation wizard for the ActiveWebflow Standard.

1. Once the Installation wizard has loaded, figure 1.0 will be displayed. Click [Next] to continue through the wizard.

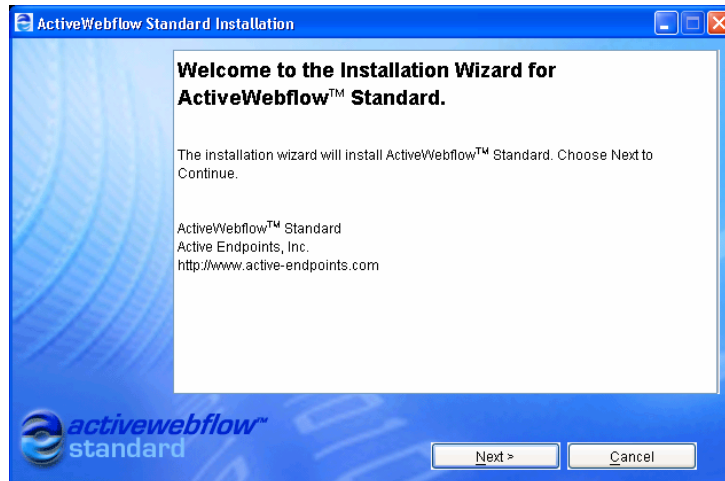


Fig 1.0 – Welcome to installation

2. The Active Endpoints license agreement will be displayed, in order to continue with the installation; the terms of the license must be accepted. Accept the license agreement by clicking on the 'I accept the terms of the license agreement' radio button. Click [Next] to continue...
3. The next stage requires the entering of 'Your name' and the license key downloaded previously. Open the license key web page saved for ActiveWebflow Standard, and copy the key data in-between the start and end points. Paste the key data into the 'License Key' text area in the installation wizard (fig 1.1). Once the correct license key has been entered, click [Next] to continue.

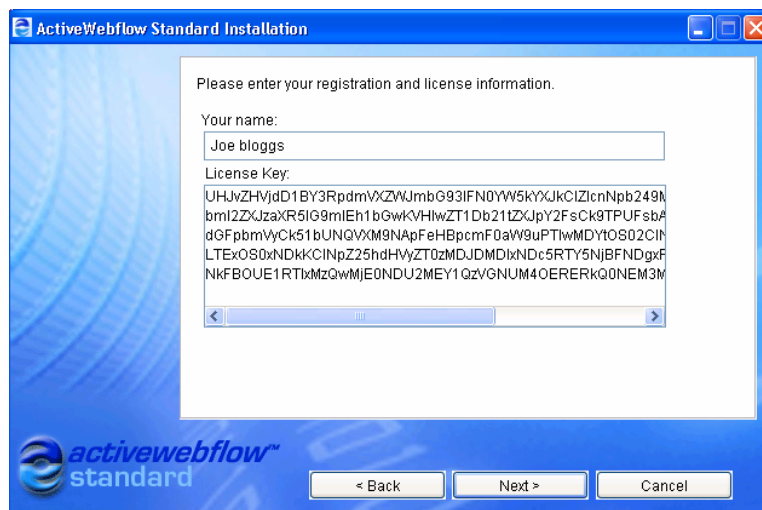


Fig 1.1 – Enter registration and licence information

4. If an acceptable license key has been entered, licensing information will be displayed listing various details including the product, version, organisation etc... Review the details to verify and click [Next] to continue.

5. The installation directory will now be displayed, the default is set to:

C:\Program Files\Active Endpoints\ActiveWebflow Standard (Windows)

or

/opt/Active_Endpoints/ActiveWebflow_Standard (Linux)

This can be changed by manually entering another directory or by clicking [Browse] and selecting the directory you wish to install to. Click [Next] to confirm the target the installation directory.

6. An installation summary will then be displayed, declaring the location of installation, installed software and the total size of installation. If these details are correct, click [Install] to start the installation, or [Back] return through the wizard.
7. Once [Install] has been clicked, a status bar will be displayed to show the installation progress (fig 1.2).

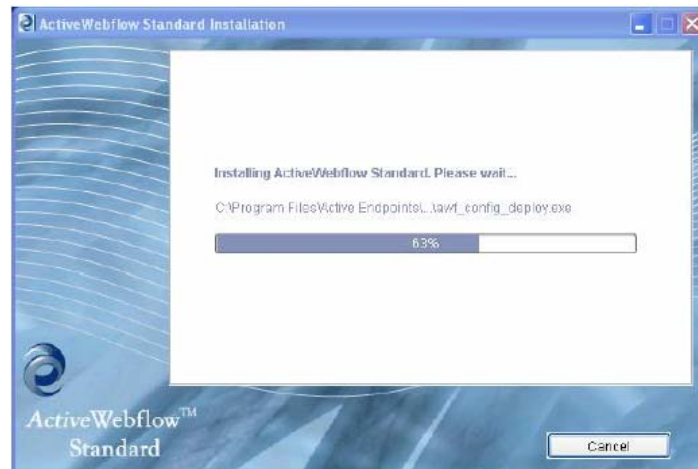


Fig 1.2 – Installation progress

8. Once the installation process is complete, the 'Post Installation Summary' will be displayed, stating that the installation was successful. There is also an option to launch the configuration and deployment tool and view the release notes. The configuration tool should be used to set your preferences and the location of your database system.

ActiveWebflow Professional Installation

For installation of ActiveWebflow Professional, use the same installation notes as for ActiveWebflow standard. The installation process involves the same steps.

ActiveBPEL Engine Installation on Solaris (and Unix)

Both 'ActiveWebflow Standard' and the latest release of 'ActiveBPEL Enterprise for Tomcat' are currently only available for installation on Windows and Linux platform systems¹. For testing, the RepoMman project is using a Solaris platform and we therefore installed the open-source 'ActiveBPEL Engine', which provides server technology for deployment of BPEL processes. Note that Unix installation is identical and that, being open-source, there is no requirement for a license key or registration.

As is noted on the ActiveBPEL website (<http://activebpel.org/info/intro/html>), the 'ActiveBPEL Engine' is a commercial-grade open-source implementation of the Business Process Execution Language for Web Services Version 1.1. specification... and is fully compliant with that specification'. In comparison with 'ActiveBPEL Enterprise', the 'ActiveBPEL Engine' provides only the basics of BPEL deployment, including versioning and a configurable server administration. It does not include the analytic and enterprise tools (eg the visual design tools and static analysis tool) that are included with 'ActiveBPEL Enterprise'.

To download the ActiveBPEL Engine the website is: -

<http://activebpel.org/download/download.php>

(The current latest version is 'ActiveBPEL Engine 2.1')

The options are quite extensive, ActiveBPEL 2.1 and ActiveBPEL 2.0 and the weekly source builds can be downloaded. For the purposes of the guide the final binary² release of Version 2.1 will be used (activebpel-2.1-bin.tar.gz). Note you will require Apache Tomcat Servlet Container server 5.0.28 before installing the ActiveBPEL engine; this can also be downloaded at the above location.

Once you have downloaded the 'tar.gz' onto a Unix server, you have to:-

1. Locate the 'tar.gz' file in a directory that is suitable for installation i.e. /usr/local and gunzip the file using the following command then pressing [Enter]: -

```
# gunzip activebpel-2.1-bin.tar.gz
#
```

2. The above task will have unzipped the file, leaving the activebpel-2.1-bin.tar in the directory; now tar needs to be executed against the file using the following command and then pressing [Enter]. The extracted files will be displayed: -

```
# tar -xvf activebpel-2.1-bin.tar
```

¹ It has been suggested that 'ActiveBPEL Enterprise for Tomcat' can be manually installed onto any platforms running a Tomcat server by using the WAR file for deployment and manually configuring ActiveBPEL's configuration files.

² Binary version is the fully compiled version of the software, which only requires to be installed. Source versions need compiling with the relevant language compiler (i.e. Java) before installation.

- Once all the files have been extracted, navigate to the activebpel-2.1 directory (which will have been created when tar was executed) and execute the install shell script: -

```
# cd activebpel-2.1
# ./install.sh
...
.
Congratulations, you have installed ActiveBPEL.
Access http://localhost:8080/BpelAdmin to test and administer your installation.
#
```

- As shown above, if the installation is successful you will get the 'Congratulations' message. As suggested, to test the installation open <http://localhost:8080/BpelAdmin> (if different replace 'localhost' with the IP for server it has been installed upon).

You will get the 'ActiveBPEL Administration' console (figure 2.1) if your installation was successful.

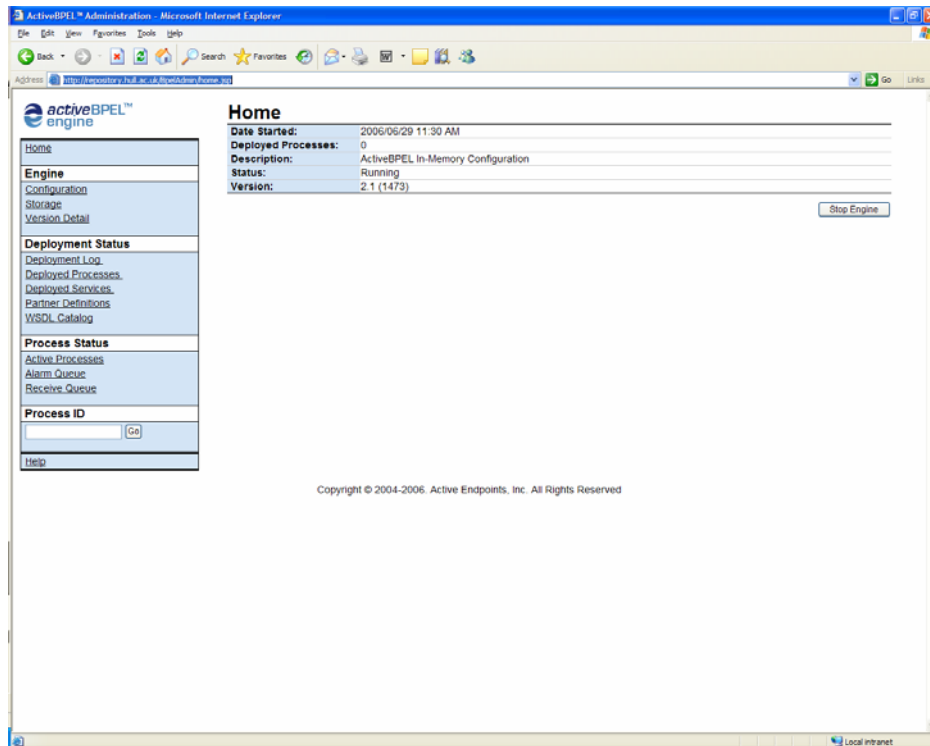


Figure 2.1 – ActiveBPEL Administration

Comments: June 2006

At the latest revision of this document the versions of the ActiveBPEL software have progressed. ActiveWebflow Professional has now been renamed and updated as 'ActiveBPEL Designer', which has new tools to cope with features that are forecasted to be in the BPEL 2.0 specification. ActiveBPEL Designer is now free to download after registering your details with ActiveEndpoints. The installation process is the same as the previous version of ActiveWebflow Professional.

Similarly 'ActiveBPEL Enterprise for Tomcat' is the new enterprise server version of 'ActiveBPEL Standard'. Again the installation and configuration process is the same as the previous version of ActiveWebFlow Standard.

